

Remember:

Circle
360°

Semi-Circle
180°

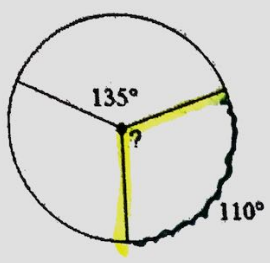
Vertical ∠'s
≅

Linear Pair
= 180°

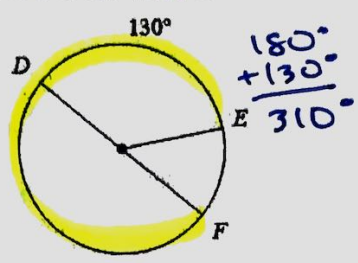
GEOMETRY - QUICK WARM-UP - DAY 7.9

Name: Key

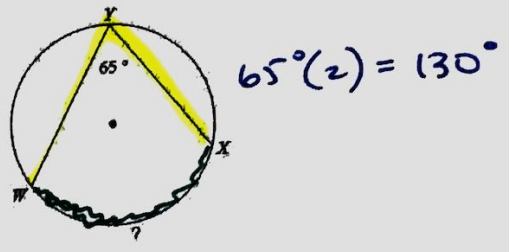
1. ? = 110°



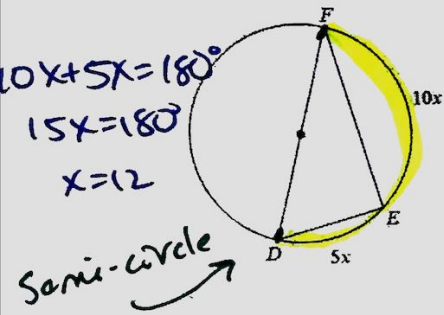
2. mArcFDE = 310°



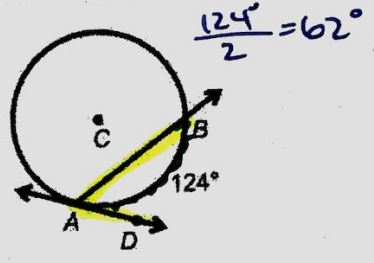
3. ? = 130°



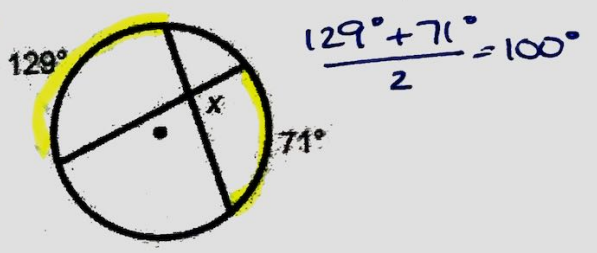
4. x = 12



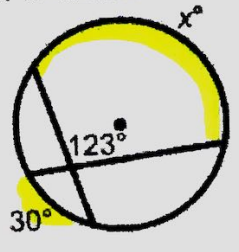
5. Find m∠BAD = 62°



6. x = 100°

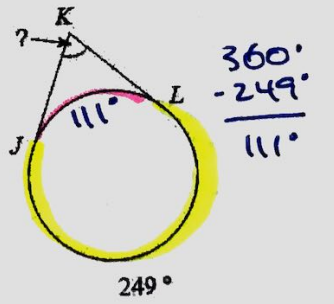


7. x = 216°



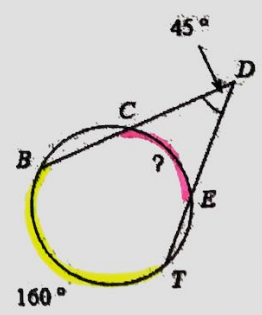
$\frac{30 + x}{2} = 123$
 $30 + x = 246$
 $x = 216$

8. ? = 69°



$\frac{249 - 111}{2} = x$

9. ? = 70°



$\frac{160 - x}{2} = 45$
 $160 - x = 90$
 $-160 \quad -160$
 $-x = -70$
 $x = 70$

Know
Chord Secant Tangent Diameter Radius

