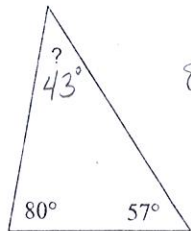


Classwork/Homework

Find the measure of each angle indicated.

1)

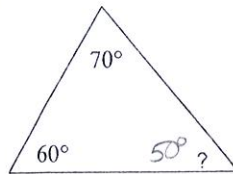


$$80 + 57 + x = 180$$

$$x + 137 = 180$$

$$\boxed{x = 43^\circ}$$

2)



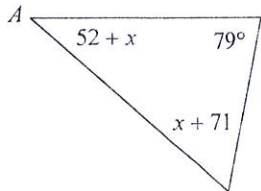
$$70 + 60 + x = 180$$

$$130 + x = 180$$

$$\boxed{x = 50^\circ}$$

Solve for x.

3)



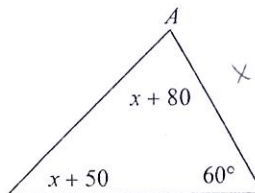
$$52 + x + x + 71 + 79 = 180$$

$$2x + 202 = 180$$

$$2x = -22$$

$$\boxed{x = -11}$$

4)



$$x + 50 + x + 80 + 60 = 180$$

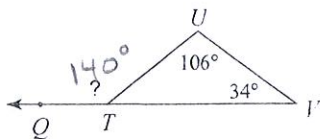
$$2x + 190 = 180$$

$$2x = -10$$

$$\boxed{x = -5}$$

Find the measure of each angle indicated.

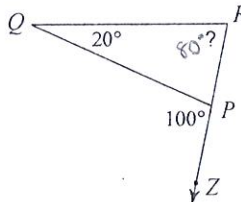
5)



$$x = 106 + 34$$

$$x = 140^\circ$$

6)

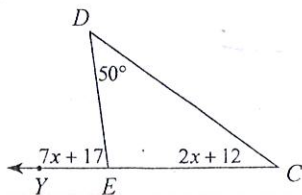


$$100 = 20 + x$$

$$\boxed{x = 80^\circ}$$

Solve for x.

7)



$$50 + 2x + 12 = 7x + 17$$

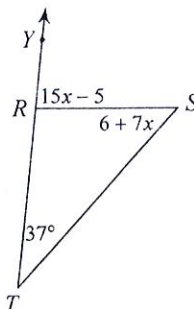
$$62 + 2x = 7x + 17$$

$$62 = 5x + 17$$

$$45 = 5x$$

$$\boxed{x = 9}$$

8)



$$15x - 5 = 6 + 7x + 37$$

$$15x - 5 = 7x + 43$$

$$8x - 5 = 43$$

$$8x = 48$$

$$\boxed{x = 6}$$

Find the value of x .

9) All sides congruent so all angles are congruent.
 $\frac{180}{3} = 60^\circ$

10) $180 - 2(67) = x$
 $180 - 134 = x$
 $46^\circ = x$

11) $m\angle 2 = 6x - 9$

$6x - 9 = 45$
 $6x = 54$
 $x = 9$

12) $m\angle 2 = 7x + 1$

$7x + 1 = 50$
 $7x = 49$
 $x = 7$

13) $x = 9$

14) $x = 6$

15) $x + 4 = 11$
 $x = 7$

16) $x + 14 = 8$
 $x = -6$