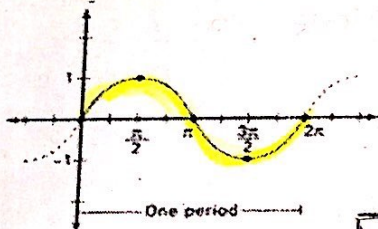


# Graphing the Six Trig Functions (similarities & differences)

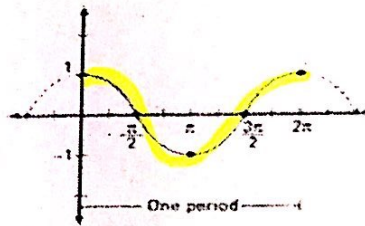
|----- one phase -----|

function	period	start	stop
$y = \sin(x)$	$2\pi$	0	$2\pi$
$y = \cos(x)$	$2\pi$	0	$2\pi$
$y = \csc(x)$	$2\pi$	0	$2\pi$
$y = \sec(x)$	$2\pi$	0	$2\pi$
$y = \tan(x)$	$\pi$	$-\frac{\pi}{2}$	$\frac{\pi}{2}$
$y = \cot(x)$	$\pi$	0	$\pi$

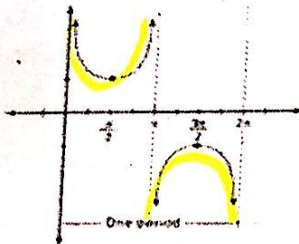
Sine Graph



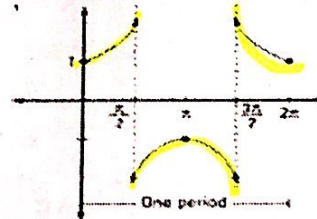
Cosine Graph



Cosecant Function



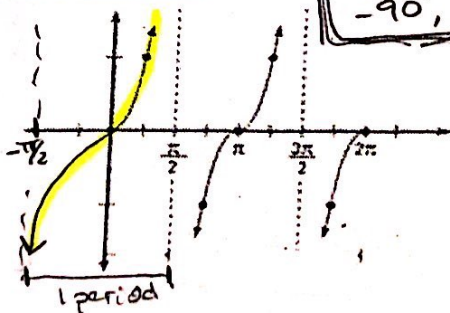
Secant Function



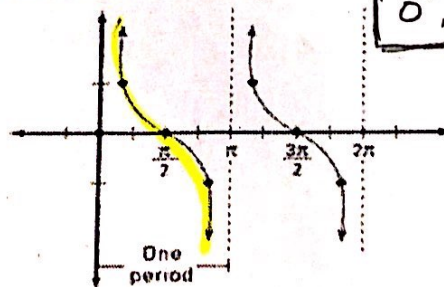
$0, 2\pi$   
 $0^\circ, 360^\circ$

$-\frac{\pi}{2}, \frac{\pi}{2}$   
 $-90^\circ, 90^\circ$

Tangent Parent function



Cotangent Parent function



$0, \pi$   
 $0^\circ, 180^\circ$