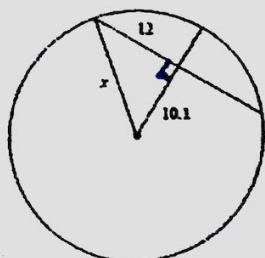


1. Solve and color the answer RED



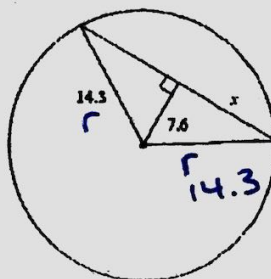
$$12^2 + 10.1^2 = x^2$$

$$144 + 102.01 = x^2$$

$$246.01 = x^2$$

$$x = 15.7$$

2. Solve and color the answer LIGHT BLUE



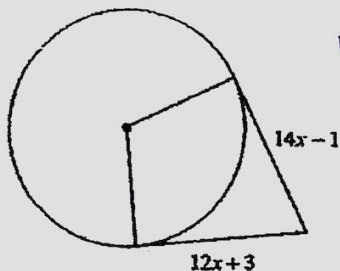
$$7.6^2 + x^2 = 14.3^2$$

$$57.76 + x^2 = 204.49$$

$$x^2 = 146.73$$

$$x = 12.1$$

3. Solve and color the answer GREEN



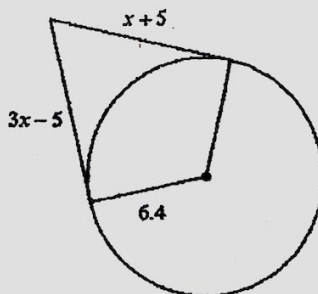
$$14x - 1 = 12x + 3$$

$$2x - 1 = 3$$

$$2x = 4$$

$$x = 2$$

4. Solve and color the answer PURPLE



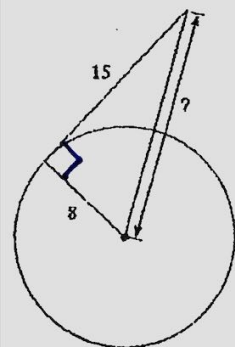
$$3x - 5 = x + 5$$

$$2x - 5 = 5$$

$$2x = 10$$

$$x = 5$$

5. Solve and color the answer BROWN



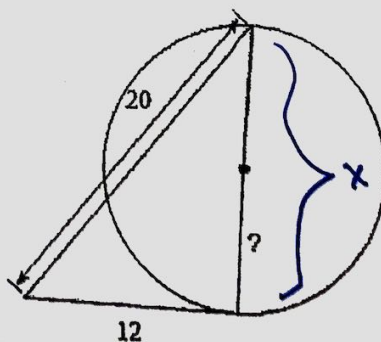
$$15^2 + 8^2 = x^2$$

$$225 + 64 = x^2$$

$$289 = x^2$$

$$x = 17$$

6. Solve and color the answer PINK



$$x^2 + 12^2 = 20^2$$

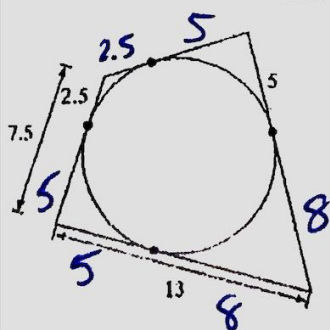
$$x^2 + 144 = 400$$

$$x^2 = 256$$

$$x = 16$$

$$? = 8$$

7. Find the perimeter and color the answer DARK BLUE



$$5 + 5 + 2.5 + 2.5 + 5 + 5 + 8 + 8 = 41$$

8. Solve and color the positive answer BLACK $x^2 - 11x - 26 = 0$

$$(x - 13)(x + 2) = 0$$

$$x - 13 = 0 \quad x + 2 = 0$$

$$x = 13 \quad x = -2$$