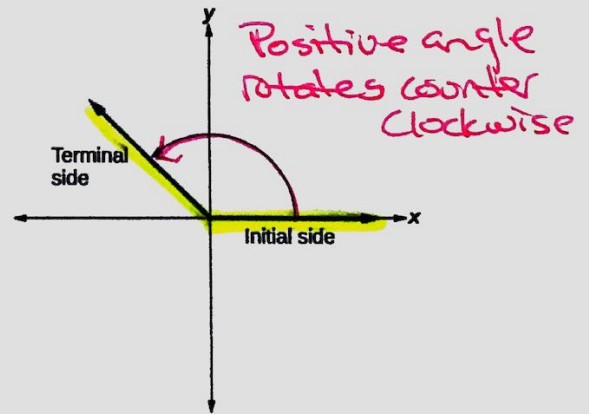


**VOCABULARY:**

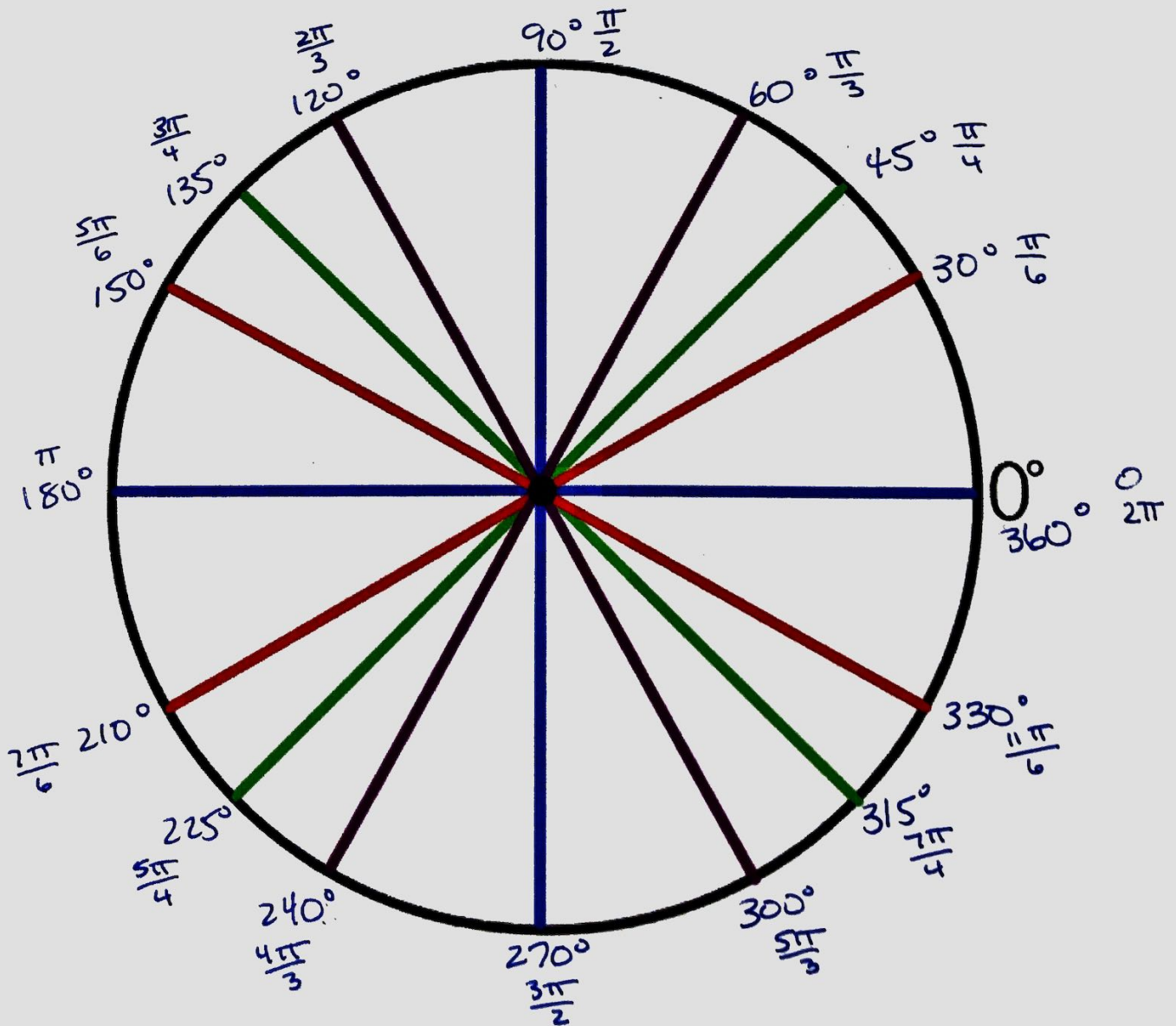
**Standard Position:** An angle with its vertex at the origin and its initial side along the positive x-axis.

The initial side is the starting side.

The terminal side is the ending side.

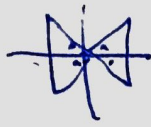


A full rotation is  $360^\circ$ . Starting with the initial side, label the angle of each line in degrees.

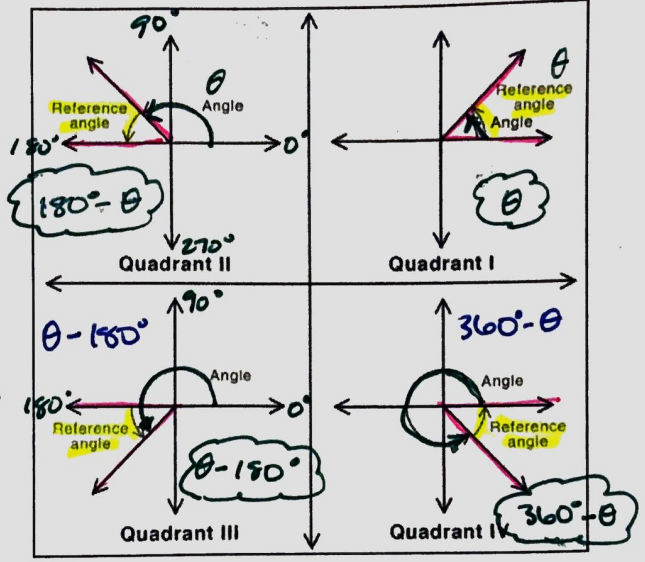


Always Positive  
 $0 < \theta < 90^\circ$

Positive  
 closest  
 x-axis

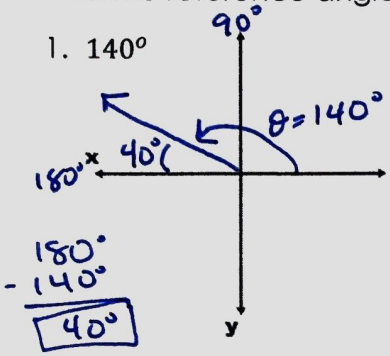


**Reference Angle:** The acute angle formed by the terminal side and the x-axis.

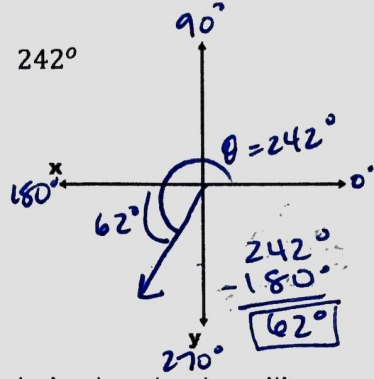


Find the reference angle.

1.  $140^\circ$



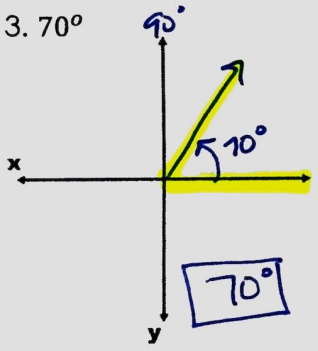
2.  $242^\circ$



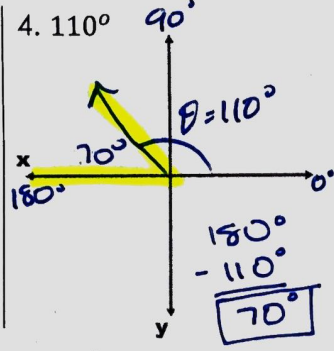
You try these! Sketch the angle in standard position and determine the reference angle.



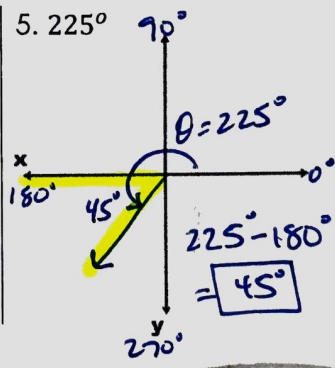
3.  $70^\circ$



4.  $110^\circ$



5.  $225^\circ$



6.  $341^\circ$

