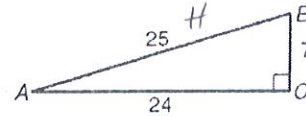


Use the figure for Exercises 1–6. Write each trigonometric ratio as a simplified fraction.



1. $\sin A = \frac{7}{25}$

2. $\cos B = \frac{7}{25}$

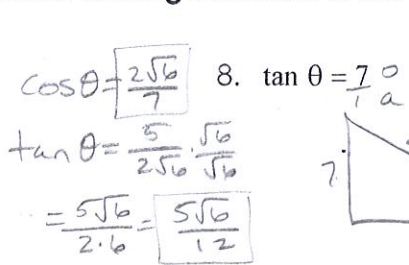
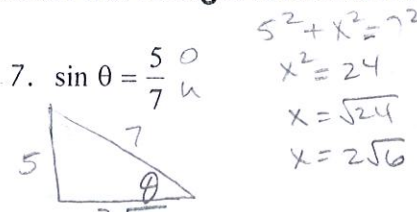
3. $\tan B = \frac{24}{7}$

4. $\sin B = \frac{24}{25}$

5. $\cos A = \frac{24}{25}$

6. $\tan A = \frac{7}{24}$

Sketch the triangle and find the other two trig functions of the acute angle.



Complete each statement.

9. The sin of 40° is equal to the cos of 50° .

10. The sin of 25° divided by the cos of 25° is equal to the tan of 25° . $\tan 25^\circ = \frac{\sin 25^\circ}{\cos 25^\circ}$.

11. The cos of 10° is equal to the sin of 10° divided by the tan of 10° . $\cos 10^\circ = \frac{\sin 10^\circ}{\tan 10^\circ}$.

Find the measure of each side indicated. Round the answers to the nearest hundredth.

