

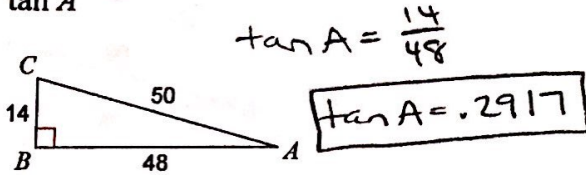
Key

Warm-Up

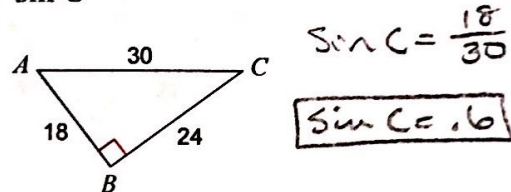
Date

Find the value of each trigonometric ratio to the nearest ten-thousandth.

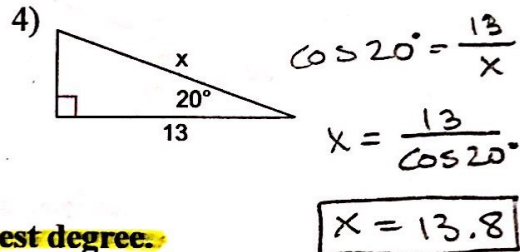
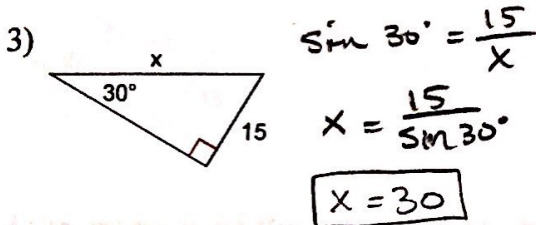
1) $\tan A$



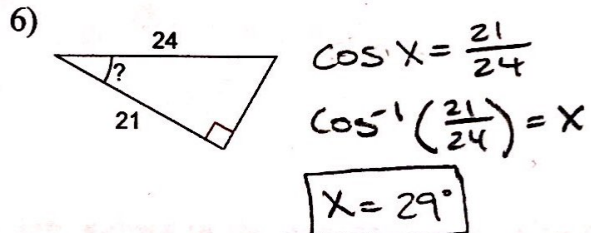
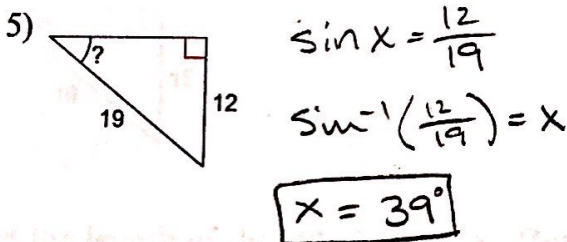
2) $\sin C$



Find the missing side. Round to the nearest tenth.



Find the measure of the indicated angle to the nearest degree.



Find the length of the side labeled x. Round intermediate values to the nearest tenth. Use the rounded values to calculate the next value. Round your final answer to the nearest tenth.

