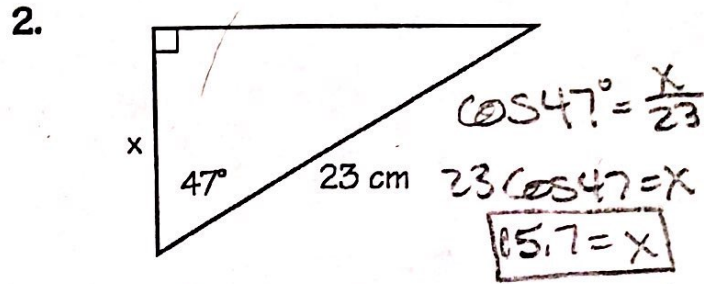
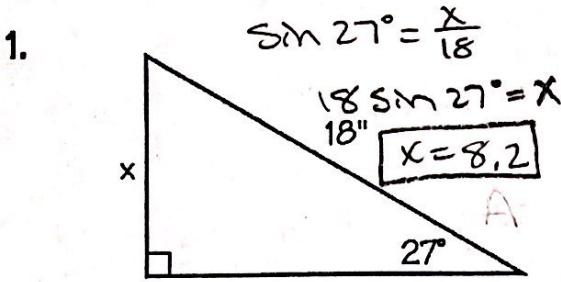
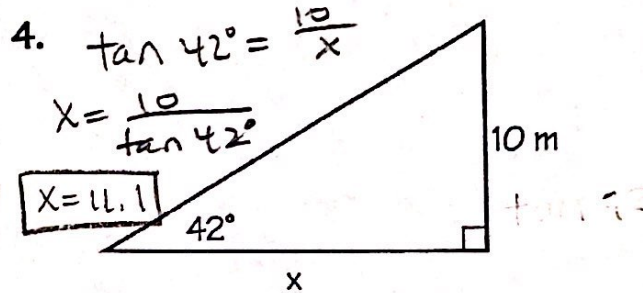
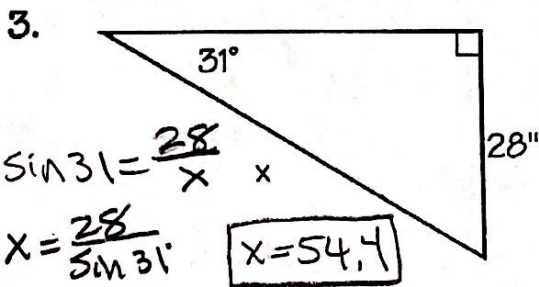


"What is a pessimist's blood type?"

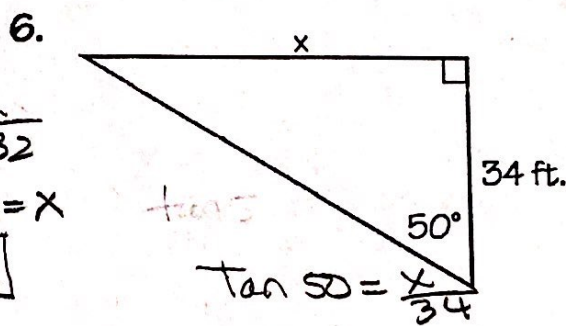
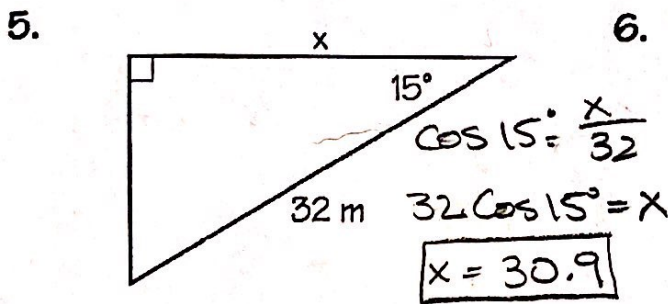
Solve the following missing lengths. Round your answers to the nearest tenth. The answer to each problem will match a letter that will allow you to figure out the joke.



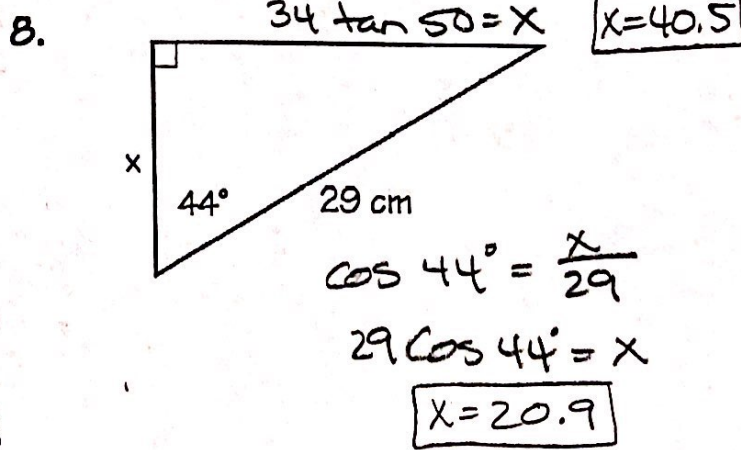
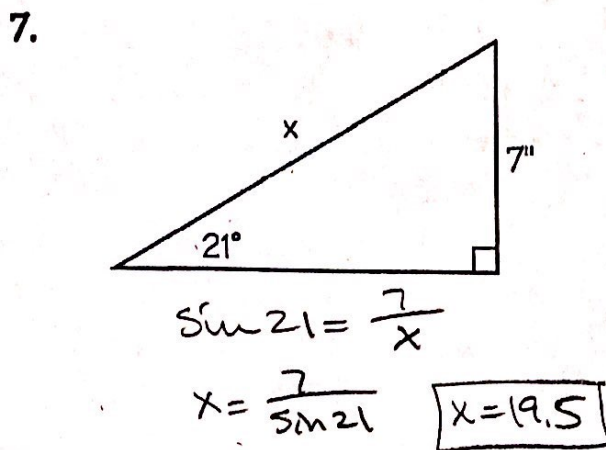
S: 12.3
 B: 20.9
 V: 30.9
 G: 11.1



U: 50.6
 A: 8.2
 T: 15.7
 O: 6.5



N: 19.5
 R: 10.7
 I: 54.4
 W: 0.3
 E: 40.5



B - N e g a t i v e
 8 7 6 4 1 2 3 5 6