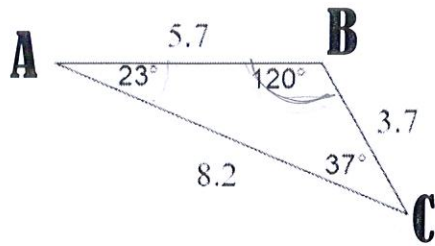
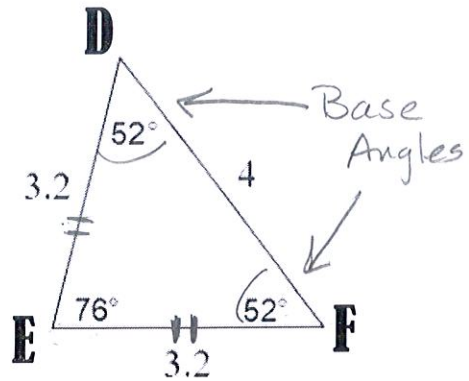


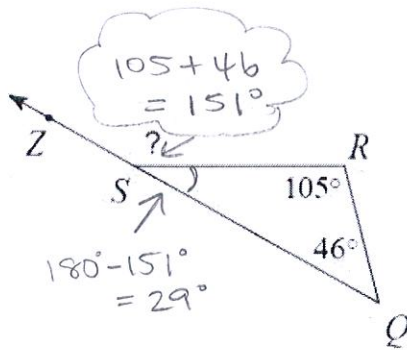
# WARM-UP! answer these questions now please!



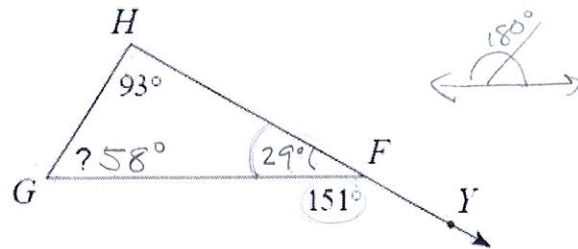
- $m\angle ABC = 120^\circ$
- $m\angle CAB = 23^\circ$
- $BC = 3.7$



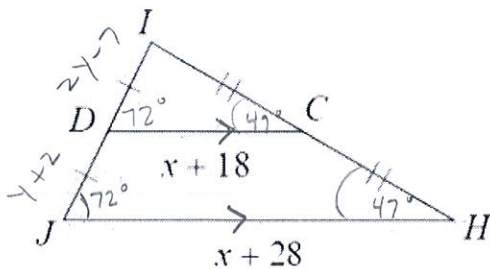
- $m\angle DFE = 52^\circ$
- $m\angle EFD = 52^\circ$
- $m\angle FED = 76^\circ$
- Name this triangle. Mark the base angles on the triangle.  $\triangle DEF$



- $m\angle SRQ = 105^\circ$
- $m\angle ZSR = 151^\circ$
- $m\angle QSR = 29^\circ$
- What kind of angle is  $\angle ZSR$ ?  
Exterior Angle / Obtuse



- $m\angle GHY = 93^\circ$
- $m\angle GFH = 29^\circ$
- $m\angle HGF = 58^\circ$
- $m\angle GFY = 151^\circ$



- $x = -8$
- $JH = -8 + 28 = 20$
- $m\angle IDC = 72$  degrees and  $m\angle CHJ = 47$  degrees
- $m\angle DJH = 72^\circ$
- $m\angle DCI = 47^\circ$
- $ID = 2y - 7$  and  $DJ = y + 2$ .  $y = 9$   
 $2y - 7 = y + 2$   
 $y = 9$