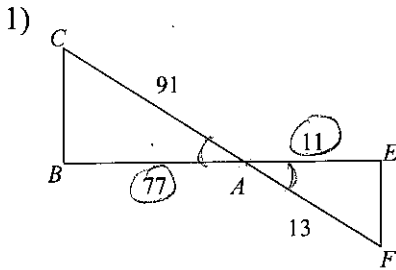


Quiz Review

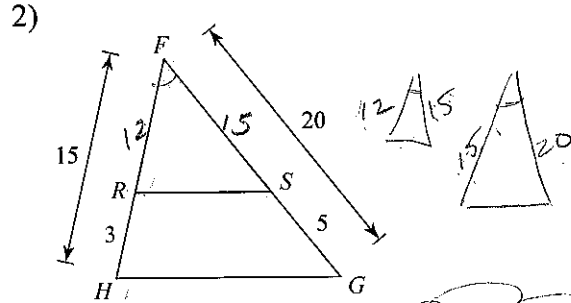
State if the triangles in each pair are similar. Use as many ways to determine similarity as you can and be sure to name the correct postulate if they are similar.



$\triangle ABC \sim \triangle AEF$

similar; SAS similarity; $\triangle AEF$

$\frac{11}{77} = \frac{13}{91} = \frac{1}{7} \checkmark$

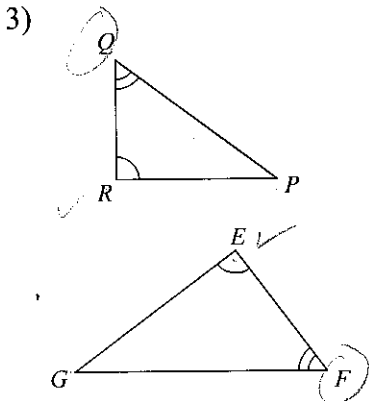


$\triangle FGH \sim \text{N/A}$

not similar

$\frac{12}{15} = \frac{4}{5}$

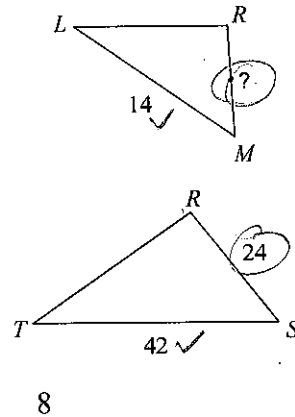
$\frac{15}{20} = \frac{3}{4}$



$\triangle EFG \sim \triangle RQP$

similar; AA similarity; $\triangle RQP$

4) $\triangle RST \sim \triangle RML$



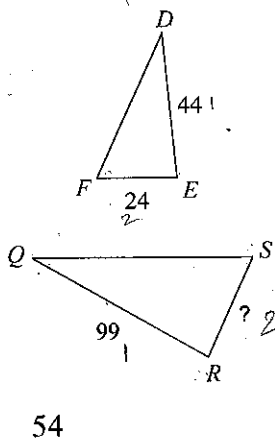
$\frac{14}{42} = \frac{x}{24}$

$42x = (14)(24)$

$42x = 336$

$x = 8$

5) $\triangle QRS \sim \triangle DEF$



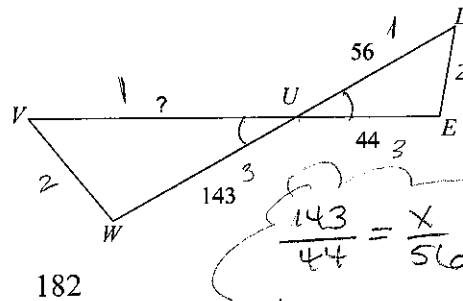
$\frac{44}{99} = \frac{24}{x}$

$44x = (99)(24)$

$44x = 2376$

$x = 54$

6) $\triangle UVW \sim \triangle UDE$



$\frac{143}{44} = \frac{x}{56}$

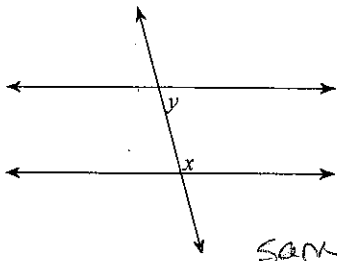
$(143)(56) = 44x$

$8008 = 44x$

$182 = x$

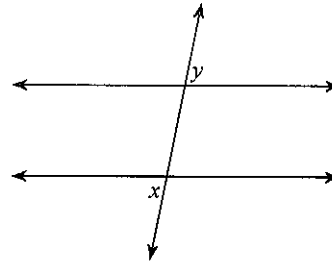
Identify each pair of angles as corresponding, alternate interior, alternate exterior, same side interior, same side exterior, vertical, or linear pair.

7)



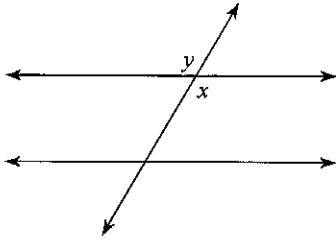
same side interior

8)



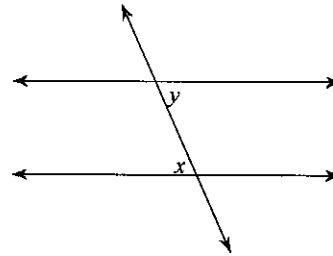
alternate exterior

9)



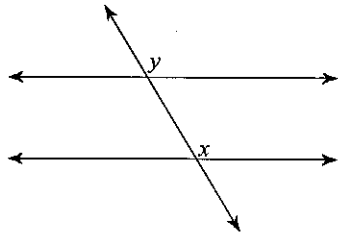
vertical

10)



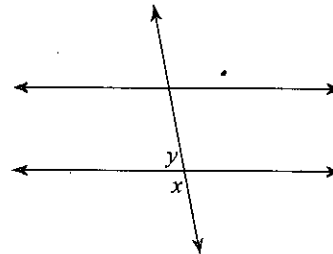
alternate interior

11)



corresponding

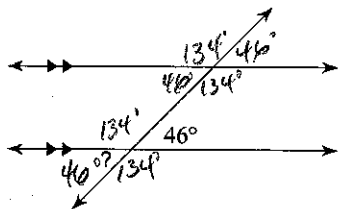
12)



Linear Pair

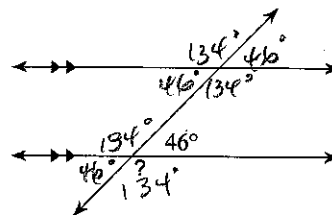
Find the measure of each angle within the diagrams. You may have to solve for x in order to do so. There should be 8 angles listed. Name the original grouped set of angles (vertical, corresponding, etc.)

13)



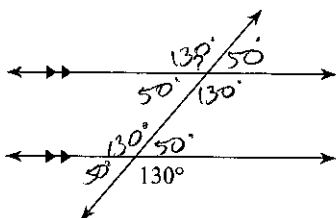
46° vertical Angles

14)



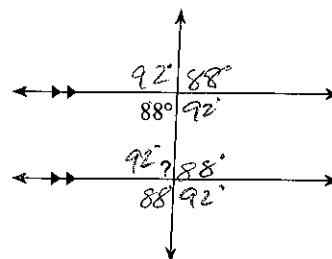
134° Linear Pair

15)



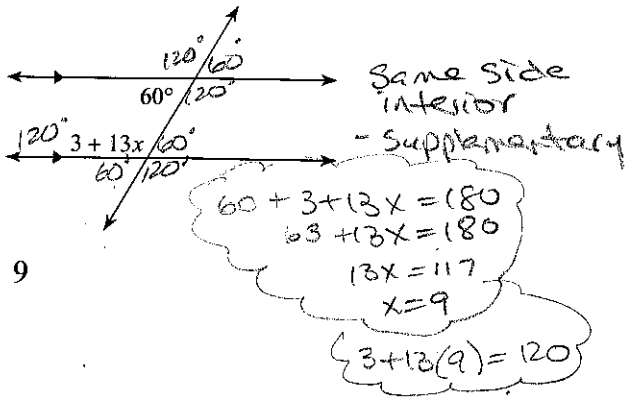
130° Alternate Exterior

16)



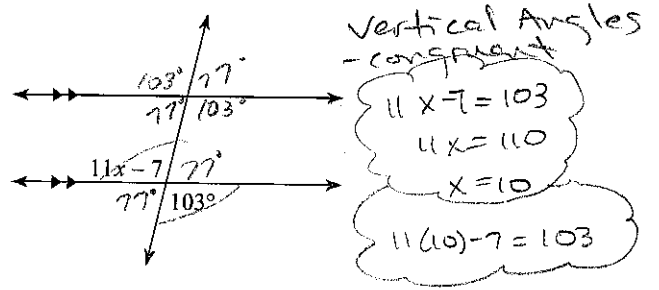
92° Same side interior

17)



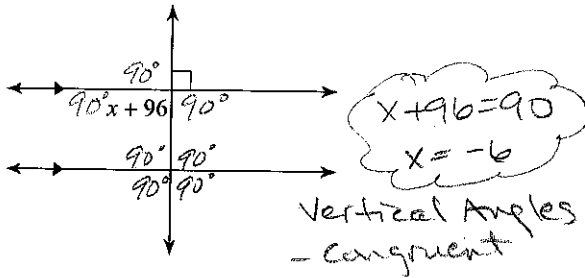
9

18)



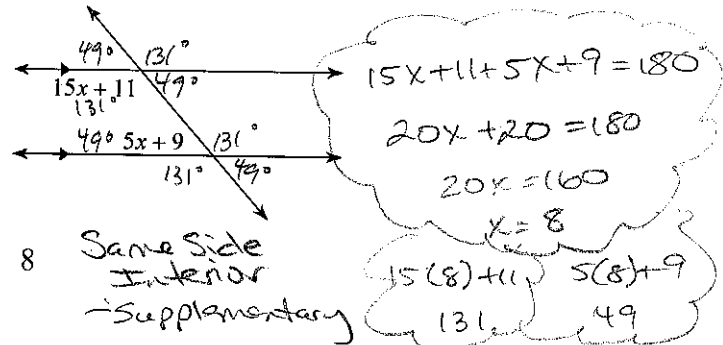
10

19)



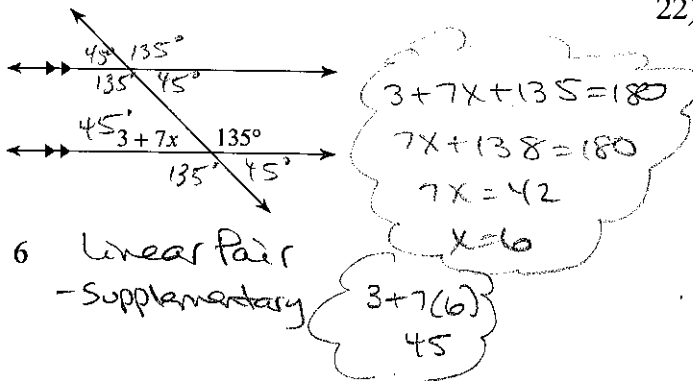
-6

20)



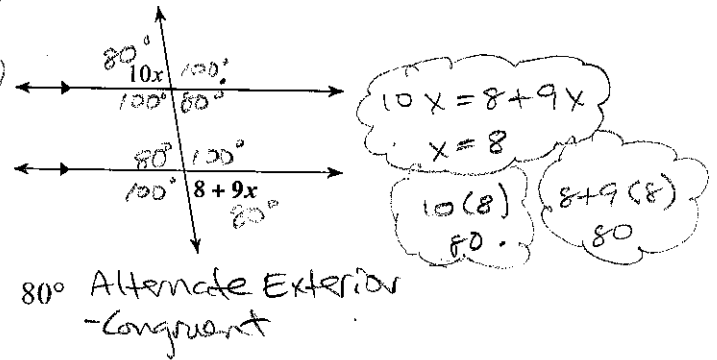
8

21)

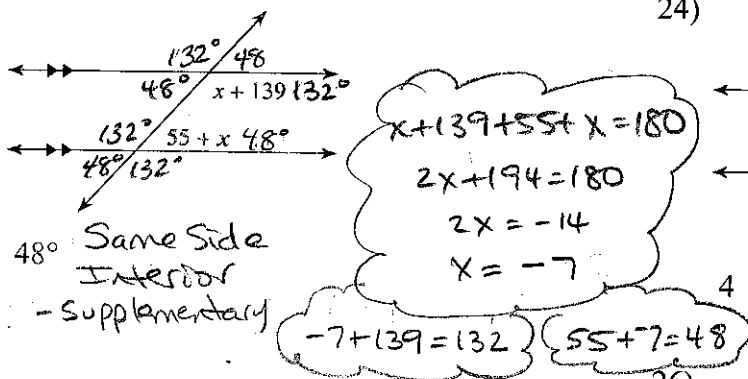


6 Linear Pair - Supplementary

22)

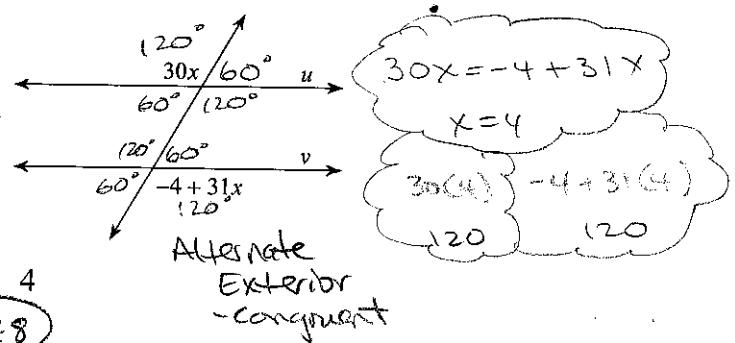


23)

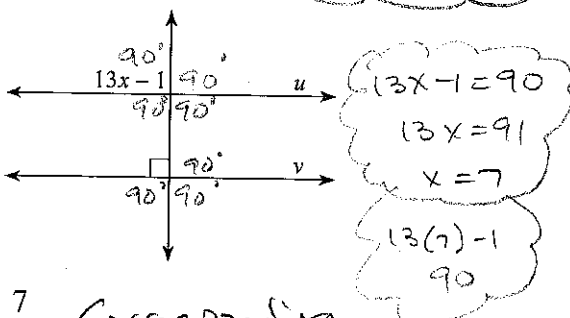


48° Same Side Interior - Supplementary

24)

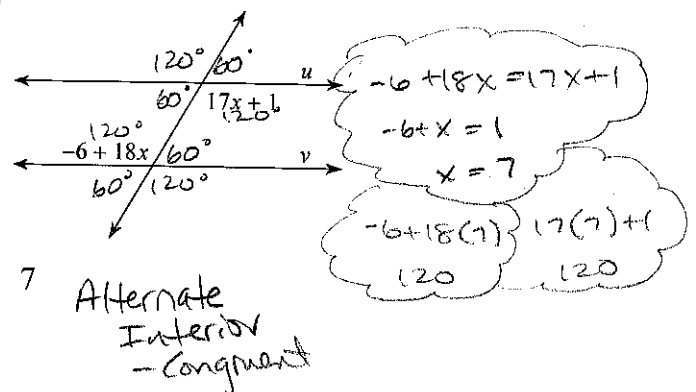


25)



7 Corresponding - Congruent

26)



7 Alternate Interior - Congruent